
AUSTRALIAN LIVER TRANSPLANT REGISTRY



*From the Combined Registries
of the Australian Liver Transplant Centres*

DATA TO 31-12-95

Preface



ALTR
12/95

This report is the Eighth Report of the Combined Australian Liver Transplant Registries and reports all liver transplants performed in Australia from January 1985 to December 1995. Data has been provided from all the Liver Transplant Units. A full list of the Units is included in Appendix A.

The data was analysed and this report prepared by the Queensland Liver Transplant Service, Brisbane. Data collation, analysis and compilation was performed by Glenda Balderson, editorial comment provide by Professor Russell Strong and Associate-Professor Stephen Lynch and the report prepared by Ms Debra-Anne Cormack.

Any questions, comments or requests for further copies of this report should be directed to:

Professor Russell Strong
Queensland Liver Transplant Service
Princess Alexandra Hospital
Ipswich Rd
WOOLLOONGABBA QLD 4102
AUSTRALIA
Phone :- 61-7-3240 2385
Fax :- 61-7-3240 2999

Contents

ALTR
12/95



SECTION 1

Demographic Data

Cumulative number of patients and transplants	1
Annual number of transplants	1
Annual number of new patients	2
Age and gender	3
Age at primary transplant	4

SECTION 2

Primary Diagnosis

Primary diagnosis - paediatric recipients	5
Primary diagnosis 1991 - 1995	6
Primary diagnosis - adult recipients	7
Primary diagnosis - 1991 - 1995	8

SECTION 3

Patient Survival

Actuarial survival - all patients	9
Survival by year of transplant	10
Survival by age group	10
Survival by primary disease - adult recipients	11-12
Survival by primary disease - paediatric recipients	13
Survival by type of primary graft - paediatric recipients	14

SECTION 4

Causes of Death

Causes of death - all patients	15
Causes of death by time post-transplant	15
Causes of death - paediatric recipients	16
Causes of death - adult recipients	16

SECTION 5

Graft Survival and Retransplantation

Actuarial graft survival - all grafts	17
Graft survival by graft number	17
Graft survival by type of graft - paediatric recipients	18
Retransplantation rate	19
Indication for retransplantation	19
Indication for retransplantation - paediatric recipients	20
Indication for retransplantation - adult recipients	20

SECTION 6

Donor Information

Source of donor - Australia / New Zealand	21
Appendix	22

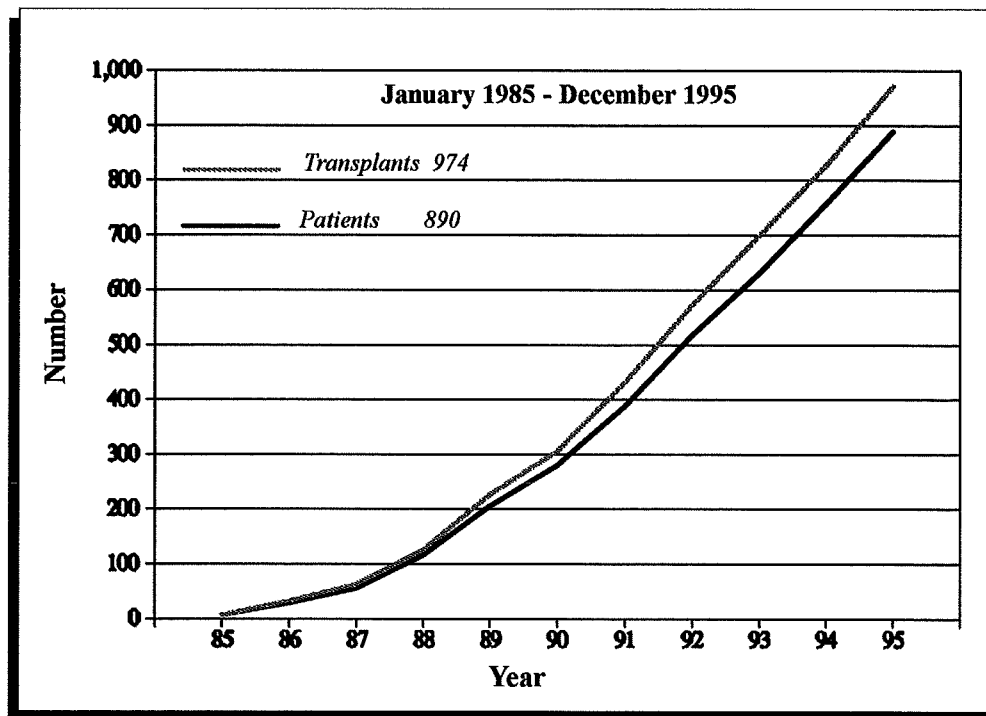


Section 1

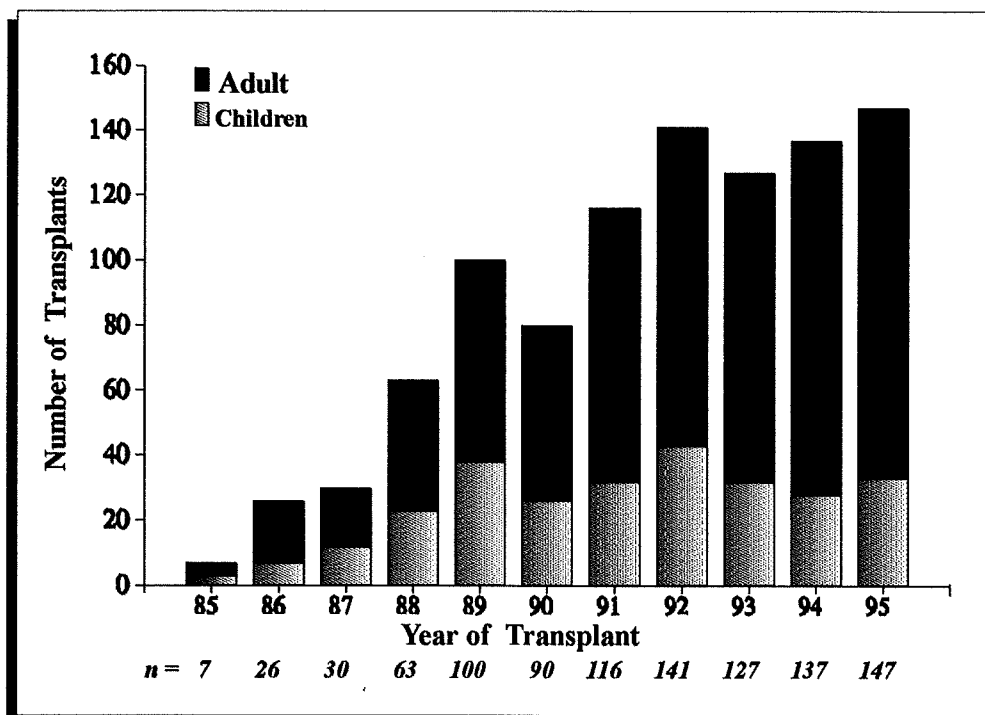
Demographic Data



Cumulative Number of Transplants and Patients

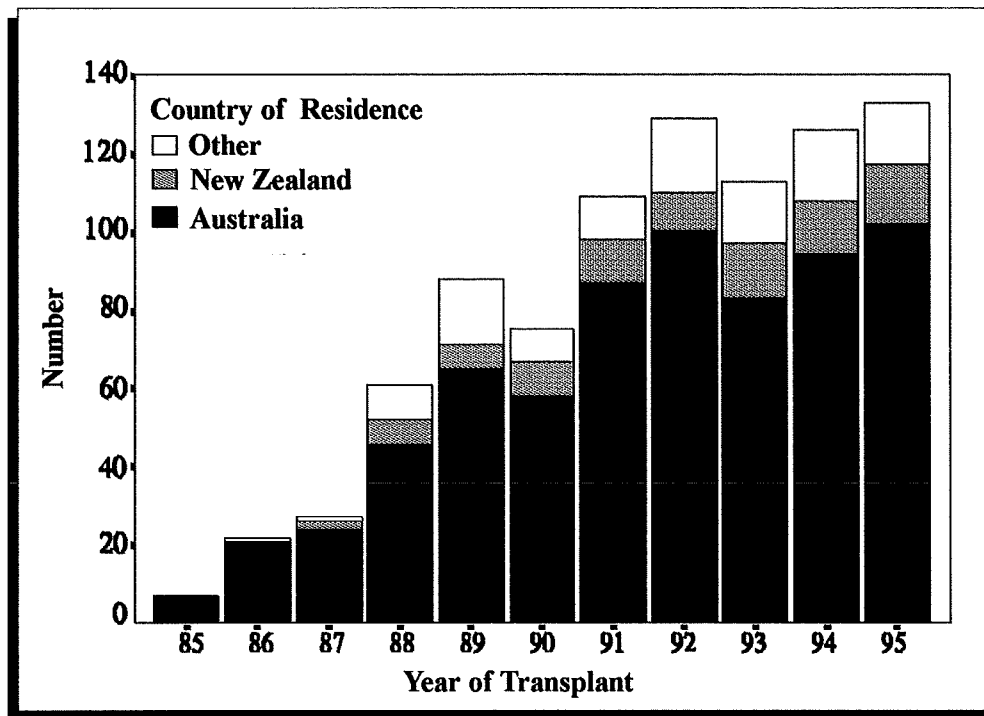


Annual Number of Transplants





Annual Number of New Patients Transplanted

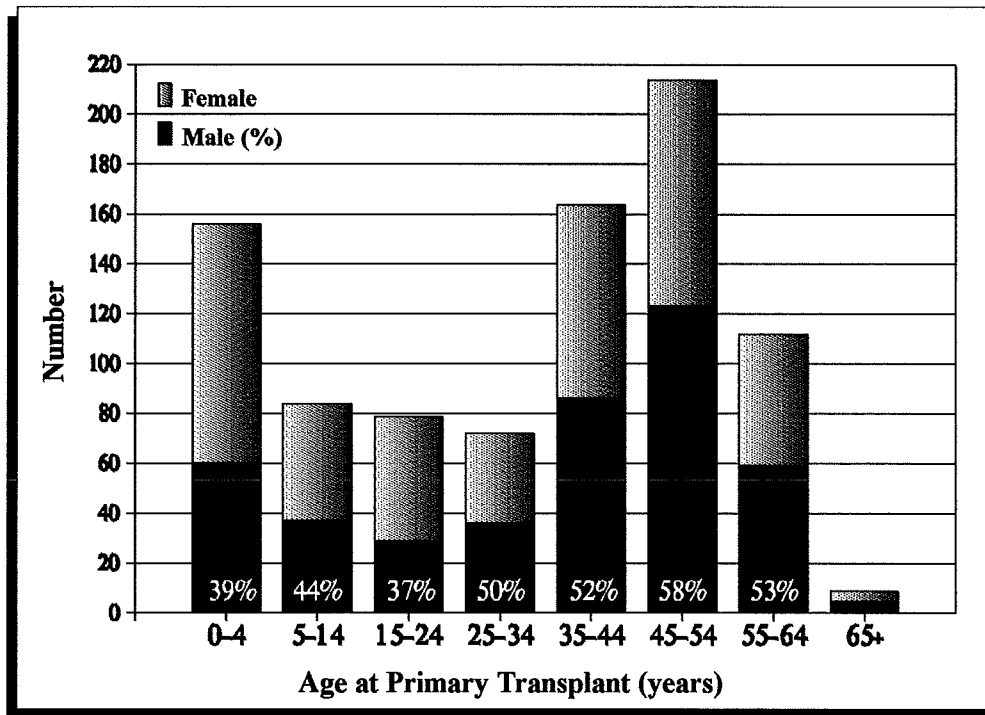


New Patients Transplanted by Country of Residence

New Patients Transplanted (per million population)		
	Australia	New Zealand
1986	1.3	
1988	2.8	1.8
1990	3.4	2.7
1992	5.7	2.9
1994	5.3	4.0



Age and Gender Distribution of Patients

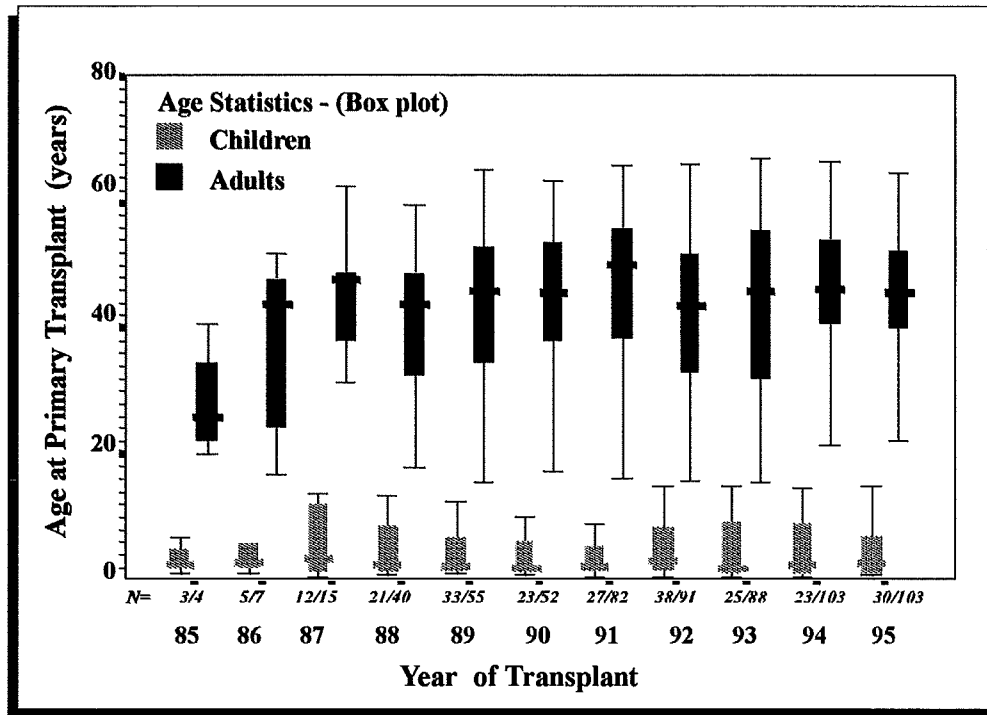


Age and Gender - Summary Statistics

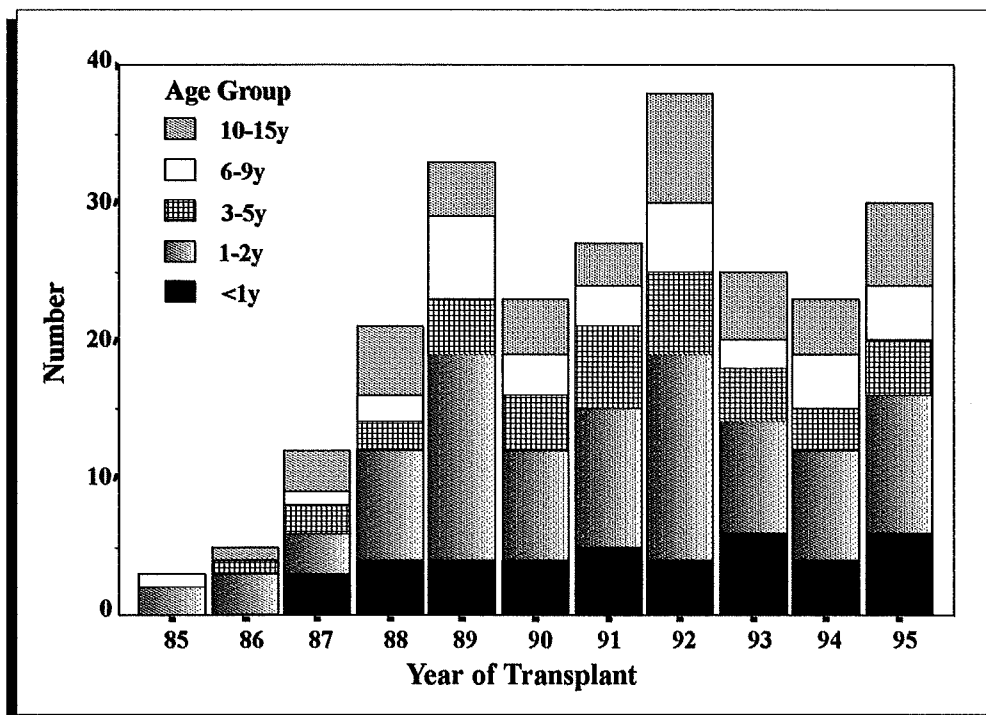
	Children	Adults
<i>n</i> =	240	650
Age		
Mean	4.7 ± 4.7y	48.6 ± 12.4
Median	2.5 y	45.4y
Range	4m - 14.8y	15 - 66.9y
Gender		
Female	143 (60%)	312 (48%)
Male	97 (40%)	338 (52%)



Age by year of Primary Transplant

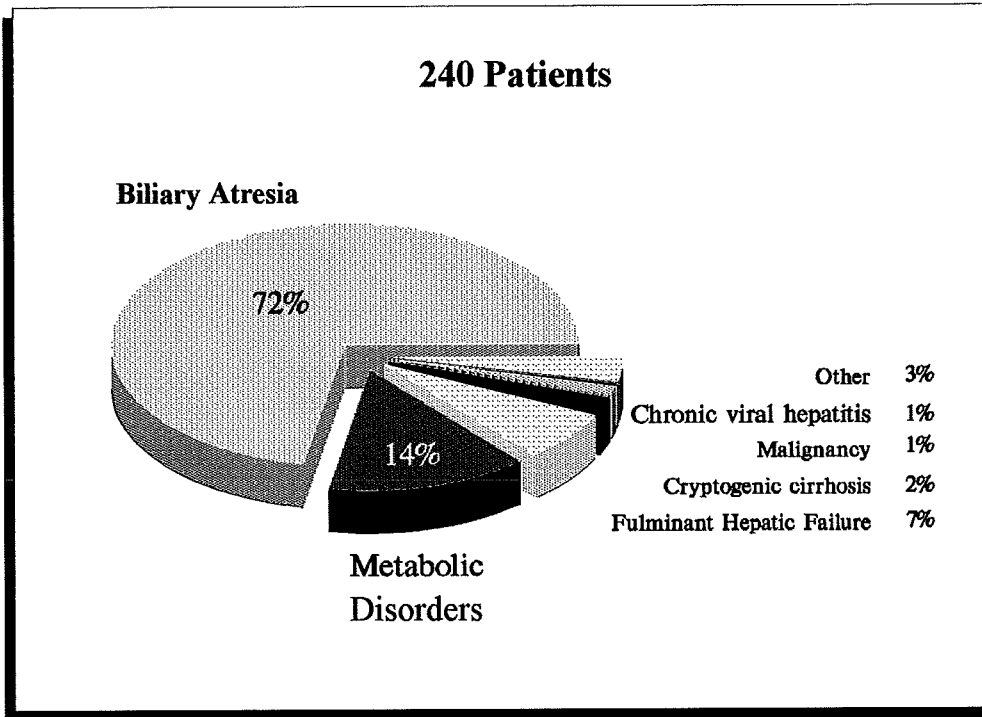


Age at Primary Transplant - Paediatric Patients

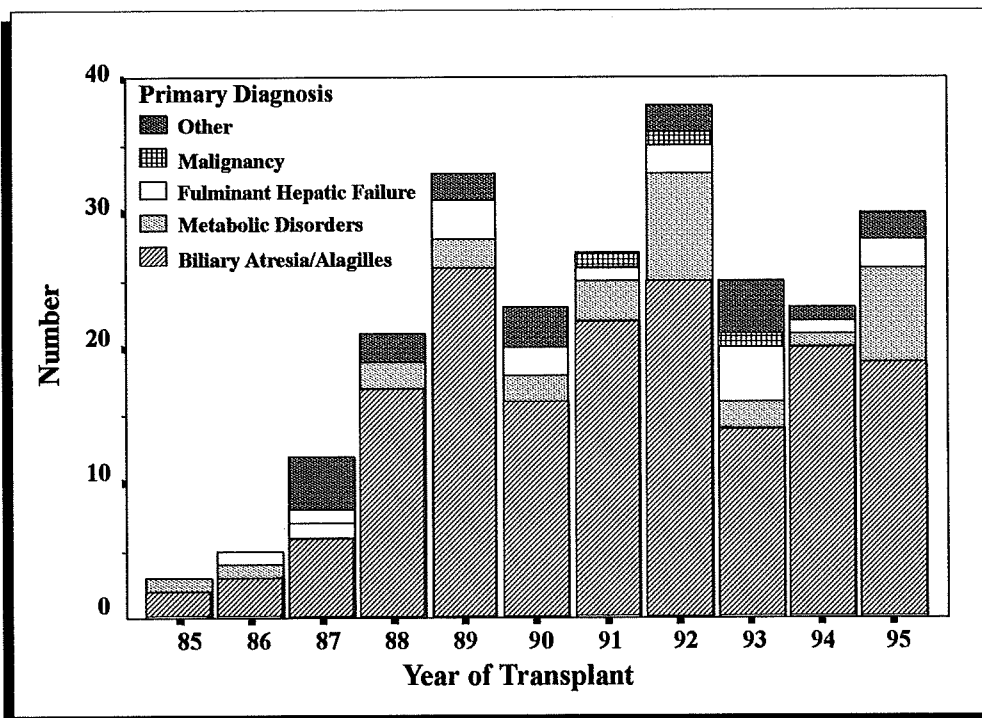




Primary Diagnosis- Paediatric Recipients



Primary Diagnosis by Year of Transplant - Paediatric Recipients





Section 2

Primary Diagnosis



**Primary Diagnosis
- Australian Resident Paediatric Patients**

	1991	1992	1993	1994	1995
Biliary Atresia	10	9	5	7	9
Alagilles Syndrome	1	1	-	1	2
Metabolic Disorders	2	7	2	1	4
(<i>α-1-Antitrypsin Deficiency</i>)	2	3	-	1	2)
(<i>Crigler-Najjar</i>)	-	1	1	-	-)
(<i>Hypomaxalosis</i>)	-	1	-	-	1)
(<i>Other</i>)	-	2	1	-	1)
Chronic Active Hepatitis :					
Idiopathic	-	1	-	-	-
Cryptogenic Cirrhosis	-	-	-	1	1
Fulminant Hepatic Failure	1	2	3	-	2
(<i>Idiopathic</i>)	1	-	1	-	2)
(<i>Non A,B,C</i>)	-	1	1	-	-)
(<i>Drug</i>)	-	1	1	-	-)
Malignancy	1	1	1	-	-
Other	1	1	2	-	1
TOTAL	16	22	13	10	19

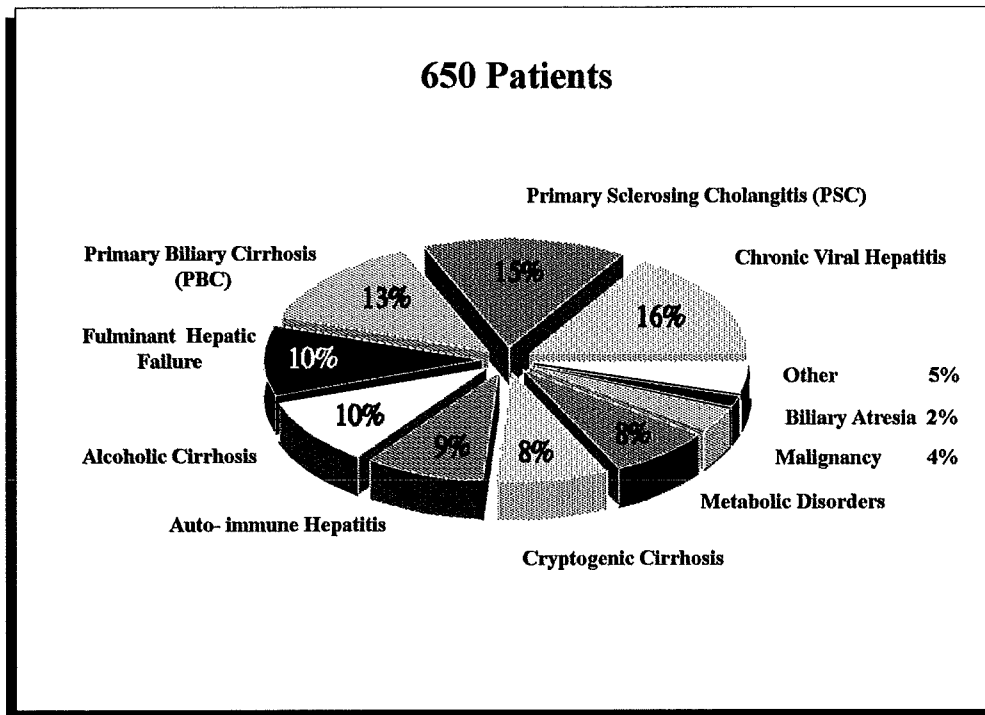


**Primary Diagnosis
- New Zealand Resident Paediatric Patients**

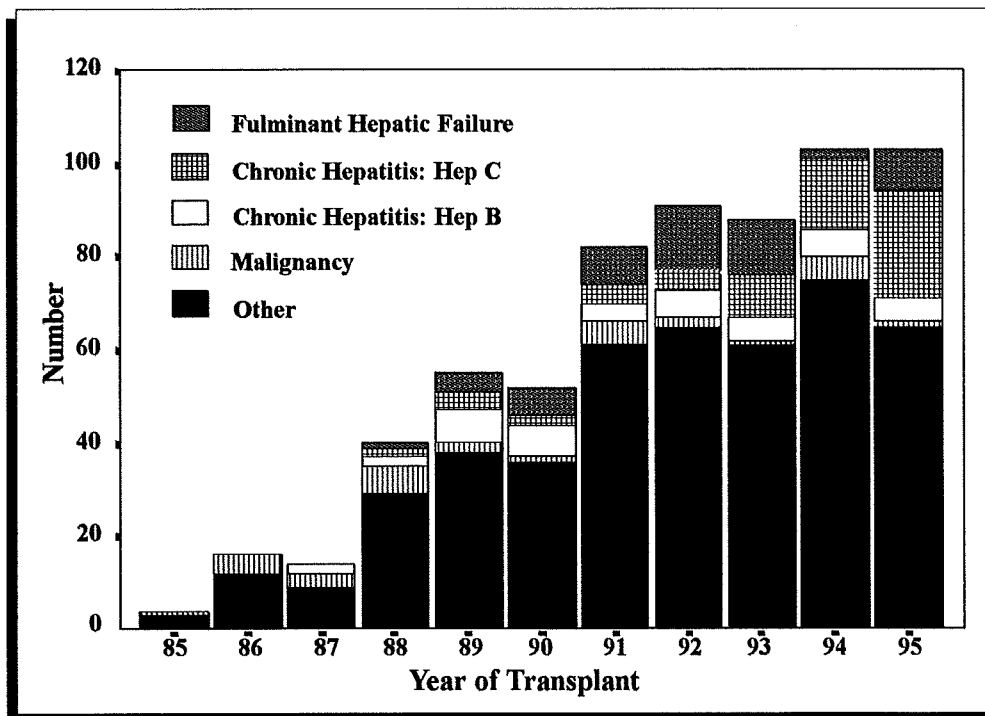
	1991	1992	1993	1994	1995
Biliary Atresia	2	2	3	6	4
Metabolic Disorders	-	-	-	-	2
(<i>α-1-Antitrypsin Deficiency</i>)	-	-	-	-	2)
Fulminant Hepatic Failure	-	-	1	-	-
(<i>Idiopathic</i>)	-	-	1	-	-)
TOTAL	2	2	4	6	6



Primary Diagnosis - Adult Recipients



Primary Diagnosis by Year of Transplant - Adult Recipients





Primary Diagnosis - Australian Resident Adult Patients

	1991	1992	1993	1994	1995
Primary Biliary Cirrhosis	9	9	10	9	9
Primary Sclerosing Cholangitis	15	10	8	14	6
Biliary Atresia	-	1	-	3	1
Metabolic Disorders	4	7	3	4	4
(α -1-Antitrypsin Deficiency)	3	1	1	-	3)
(Haemochromatosis)	-	4	1	3	1)
(Wilson's Disease)	-	2	1	1	-)
(Other)	1	-	-	-	-)
Alcoholic Cirrhosis	8	9	10	12	9
Chronic Active Hepatitis					
Autoimmune	6	12	6	8	7
Hepatitis B	4	6	4	6	5
Hepatitis C	3	2	8	13	20
Idiopathic	-	1	-	-	-
Cryptogenic Cirrhosis	6	6	6	5	10
Fulminant Hepatic Failure	7	10	8	2	9
(Idiopathic)	4	3	3	-	4)
(Hepatitis Non A,B,C)	1	1	2	-	1)
(Hepatitis B)	1	2	2	-	1)
(Hepatitis E)	-	-	-	-	1)
(Drug-induced Hepatitis)	1	3	1	1	2)
(Wilson's Disease)	-	1	-	1	-)
Sub-acute Hepatic Failure	1	1	2	-	-
Malignancy	4	1	1	4	1
Other	4	3	4	4	2
TOTAL	71	78	70	84	83



Primary Diagnosis - New Zealand Resident Adult Patients

	1991	1992	1993	1994	1995
Primary Biliary Cirrhosis	2	-	-	2	1
Primary Sclerosing Cholangitis	-	2	2	2	3
Metabolic Disorders	1	-	1	-	3
(α -1-Antitrypsin Deficiency)	1	-	-	-	-)
(Haemochromatosis)	-	-	-	-	1)
(Wilson's Disease)	-	-	1	-	-)
(Other)	-	-	-	-	2)
Alcoholic Cirrhosis	1	1	-	1	-
Chronic Active Hepatitis					
Autoimmune	1	-	1	2	1
Cryptogenic Cirrhosis	1	1	-	1	-
Fulminant Hepatic Failure	1	4	4	-	-
(Idiopathic)	1	1	1	-	-)
(Hepatitis B)	-	1	3	-	-)
(Hepatitis Non A,B,C)	-	2	-	-	-)
Sub-acute Hepatic Failure	1	-	1	-	-
Malignancy	1	-	-	-	-
Other	-	-	1	-	1
TOTAL	9	8	10	8	9

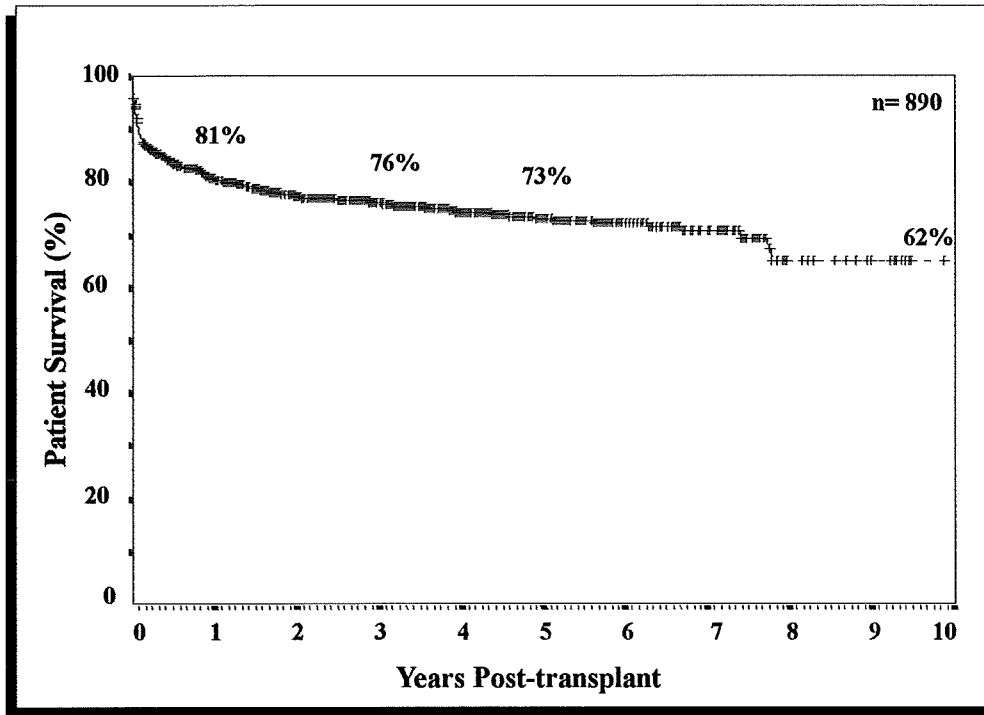


Section 3

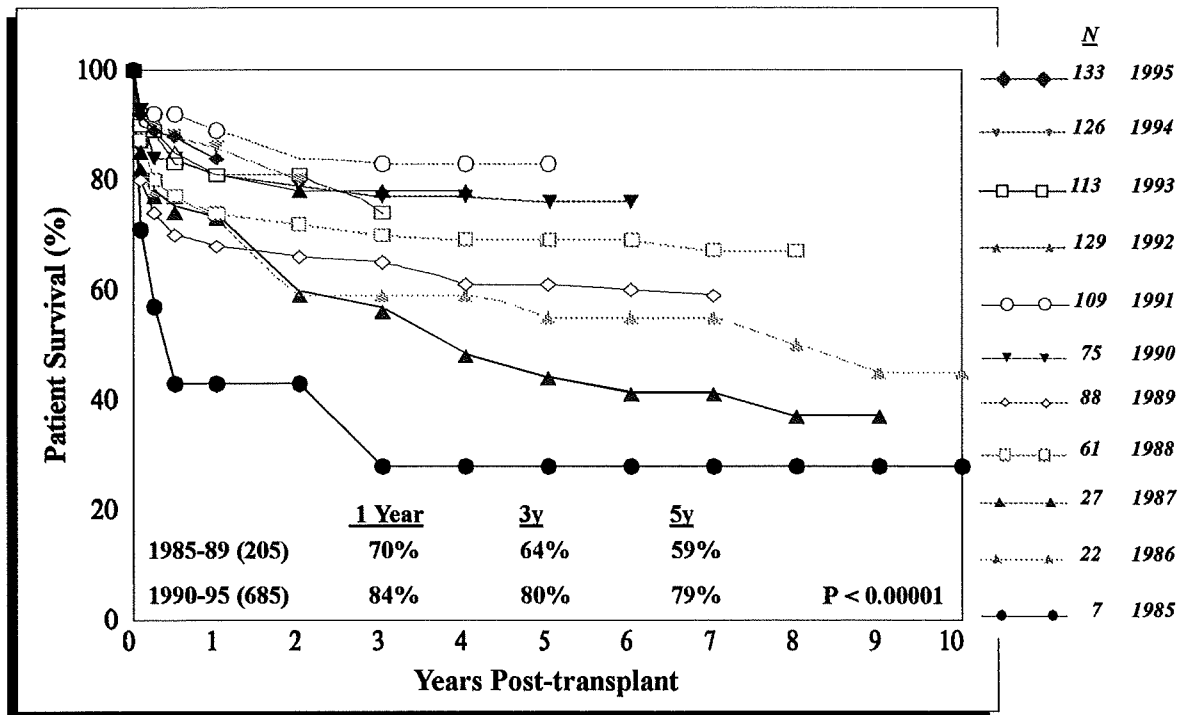
Patient Survival



Actuarial Survival - All Patients

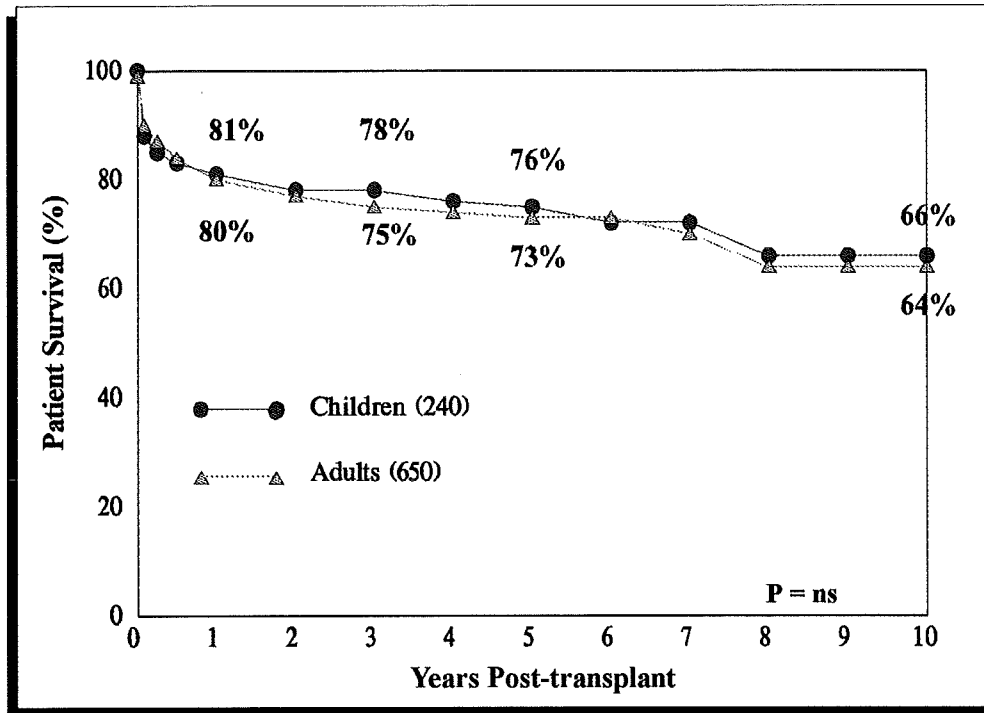


Actuarial Survival by Year of Primary Transplant

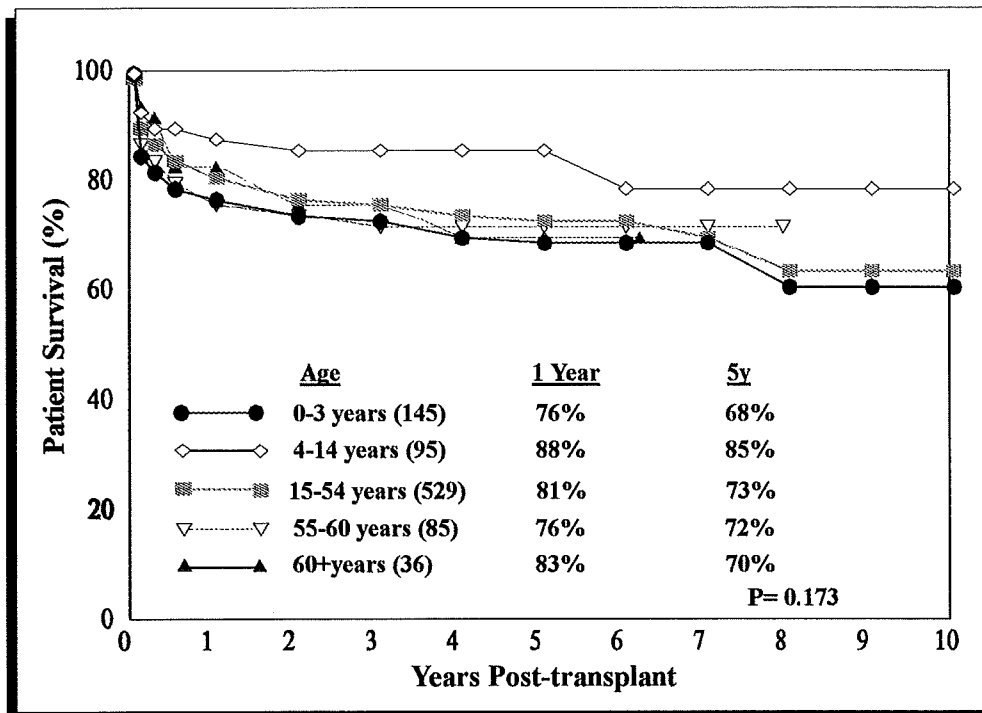




Actuarial Survival by Age Group

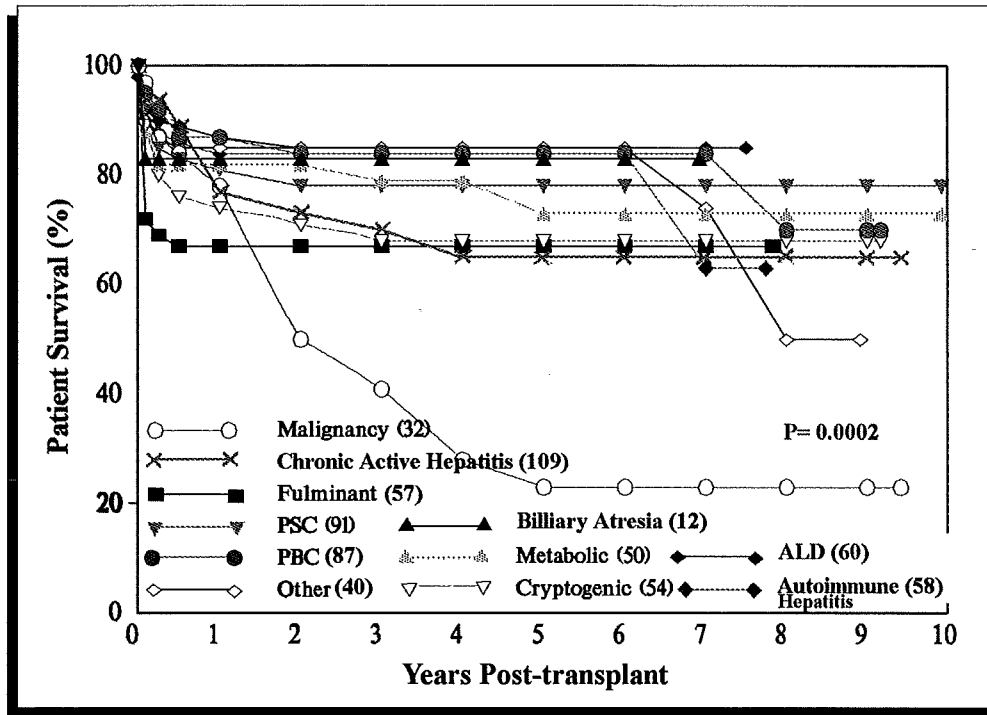


Actuarial Survival by Age at Primary Transplant

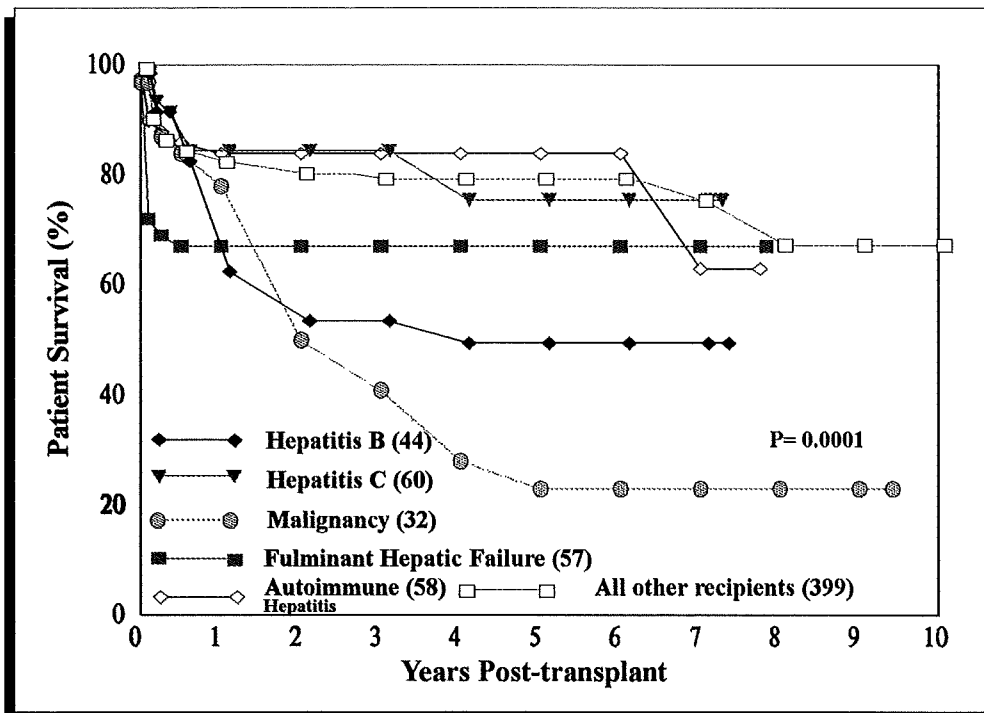




Actuarial Survival by Primary Diagnosis - Adult Recipients



Actuarial Survival - Adult recipients



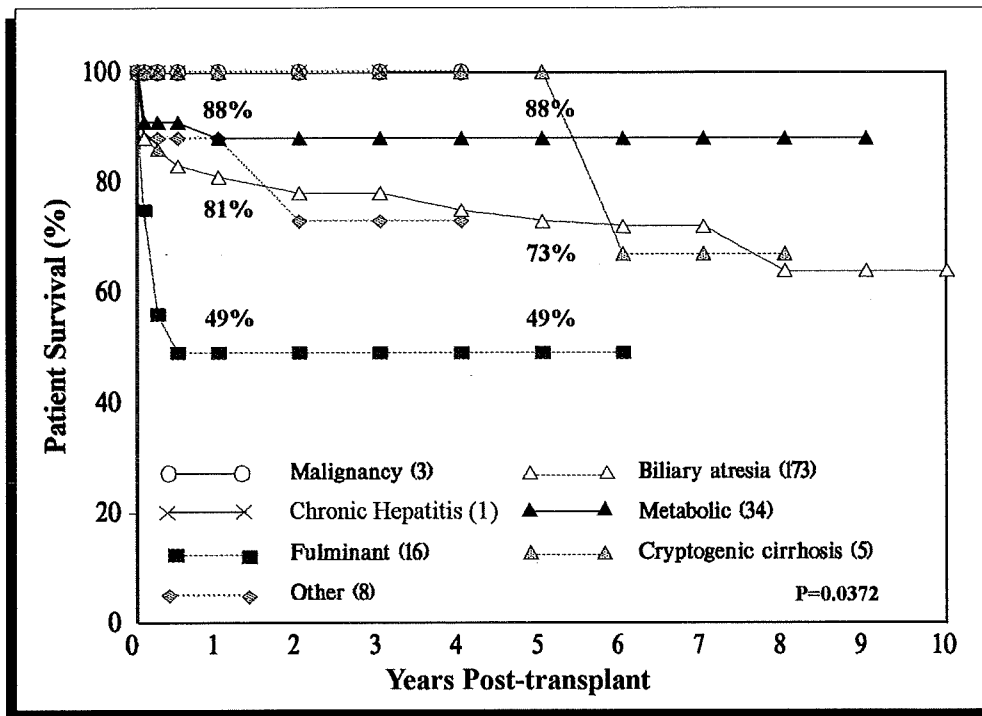


**Actuarial Patient Survival by Primary Disease
- Adult patients**

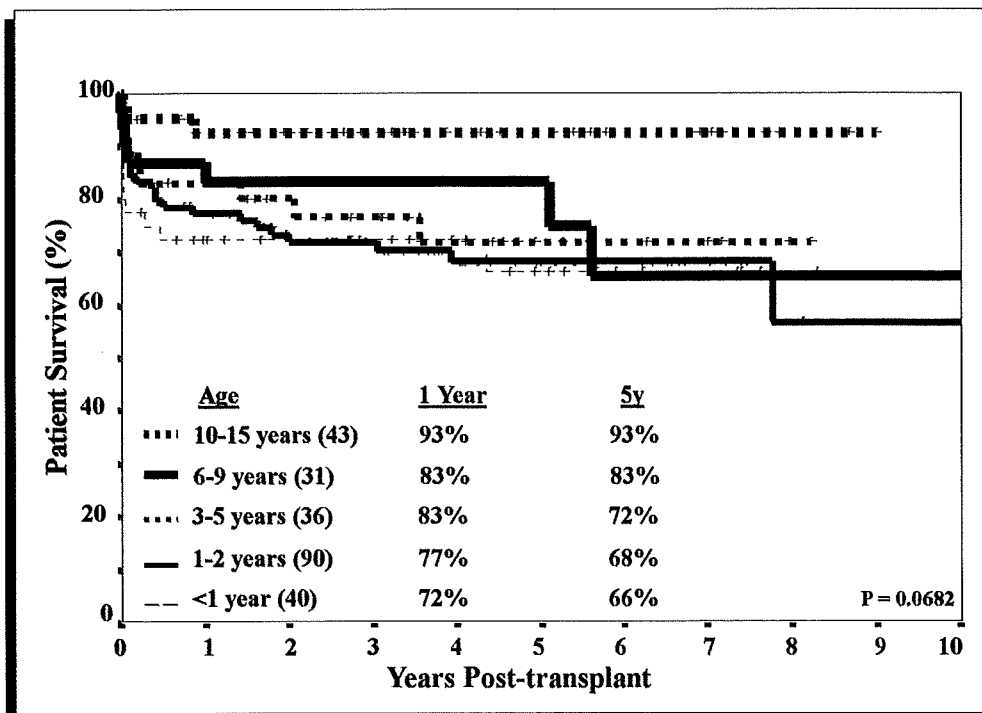
	Number	1 Year	3 Year	5 Year
Primary Biliary Cirrhosis (PBC)	87	87%	84%	84%
Primary Sclerosing Cholangitis (PSC)	91	81%	78%	78%
Biliary Atresia	12	83%	83%	83%
Metabolic Disorders	50	82%	79%	73%
Alcoholic Cirrhosis (ALD)	63	84%	82%	82%
Chronic Active Hepatitis :				
Autoimmune	58	86%	84%	84%
Hepatitis B	44	64%	55%	51%
Hepatitis C	60	87%	87%	79%
Cryptogenic Cirrhosis	54	74%	68%	68%
Fulminant Hepatic Failure	58	66%	66%	66%
Malignancy	32	78%	41%	23%
Other	45	85%	85%	85%
All Adult Recipients	650	80%	75%	73%



Actuarial Survival by Primary Diagnosis - Paediatric Recipients

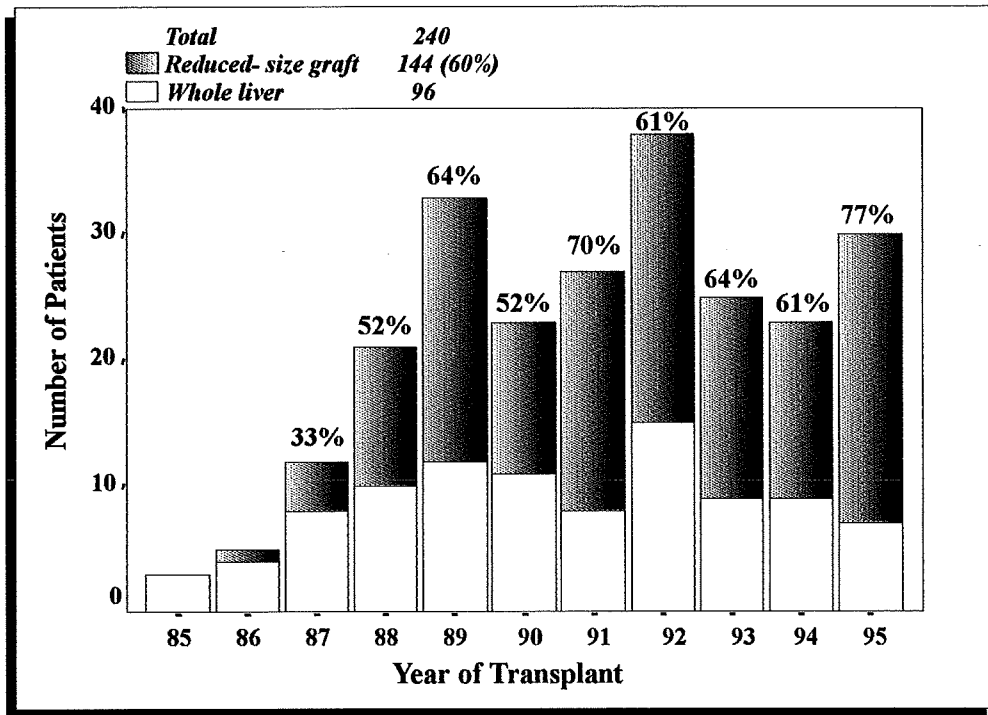


Actuarial Survival by Age at Primary Transplant - Paediatric Recipients

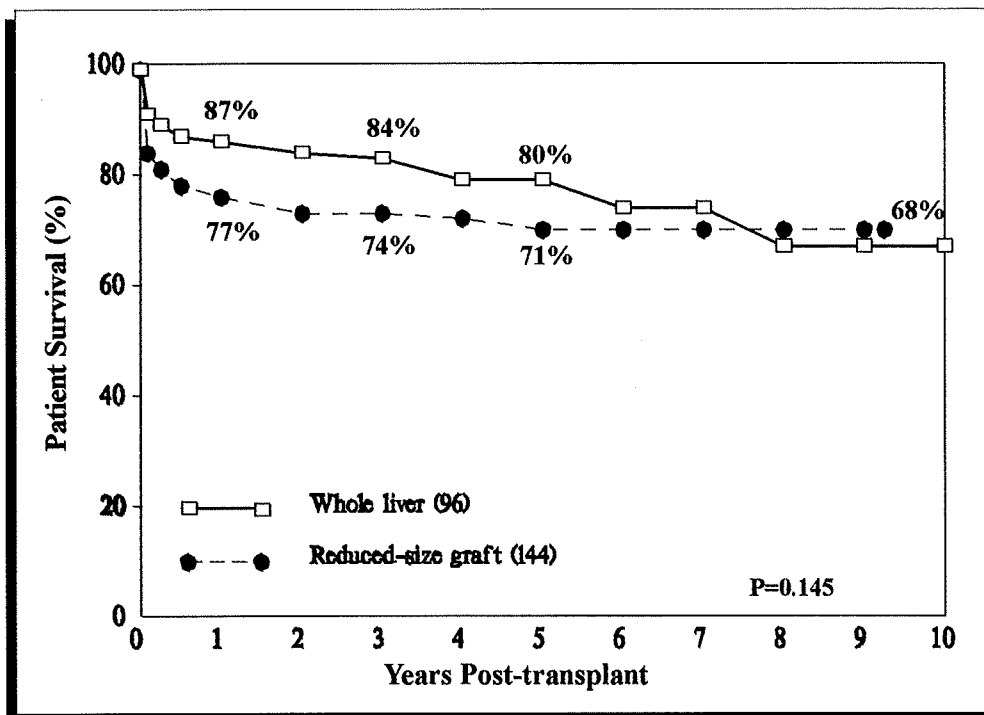




Type of Primary Graft - Paediatric Recipients



Actuarial Patient Survival by Type of Primary Graft



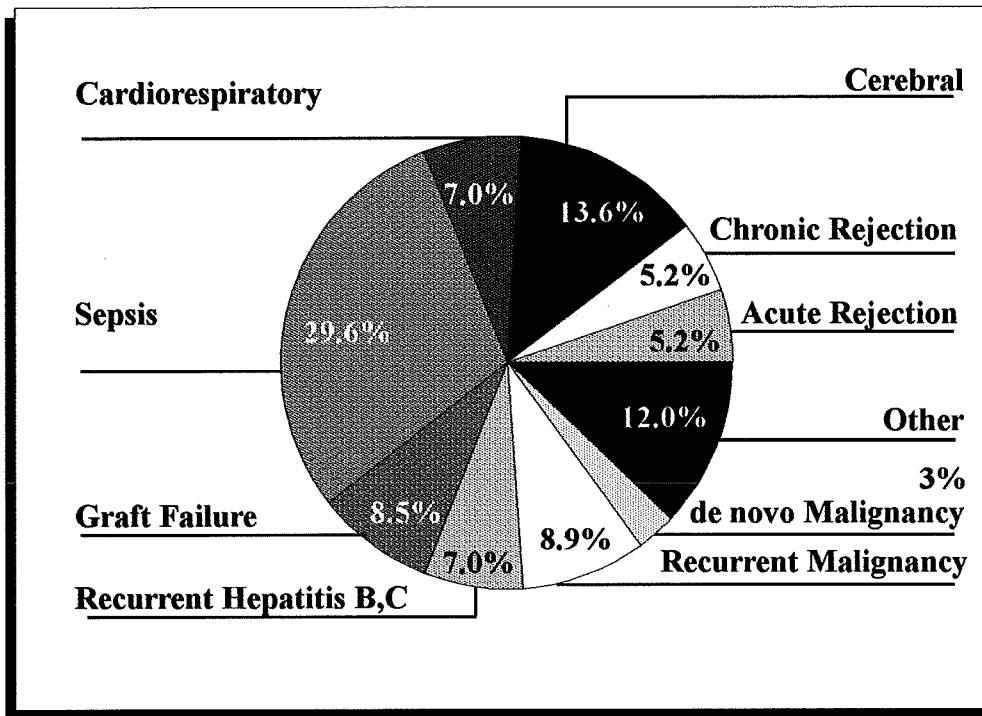


Section 4

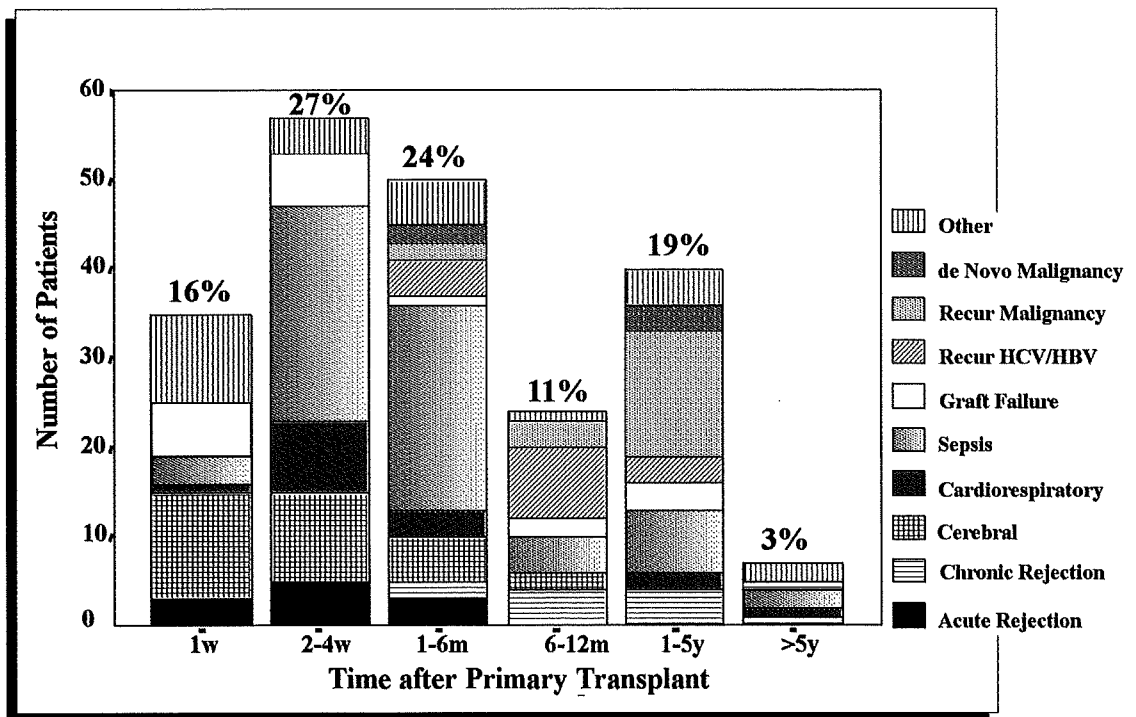
Causes of Death



Causes of Death - All Patients

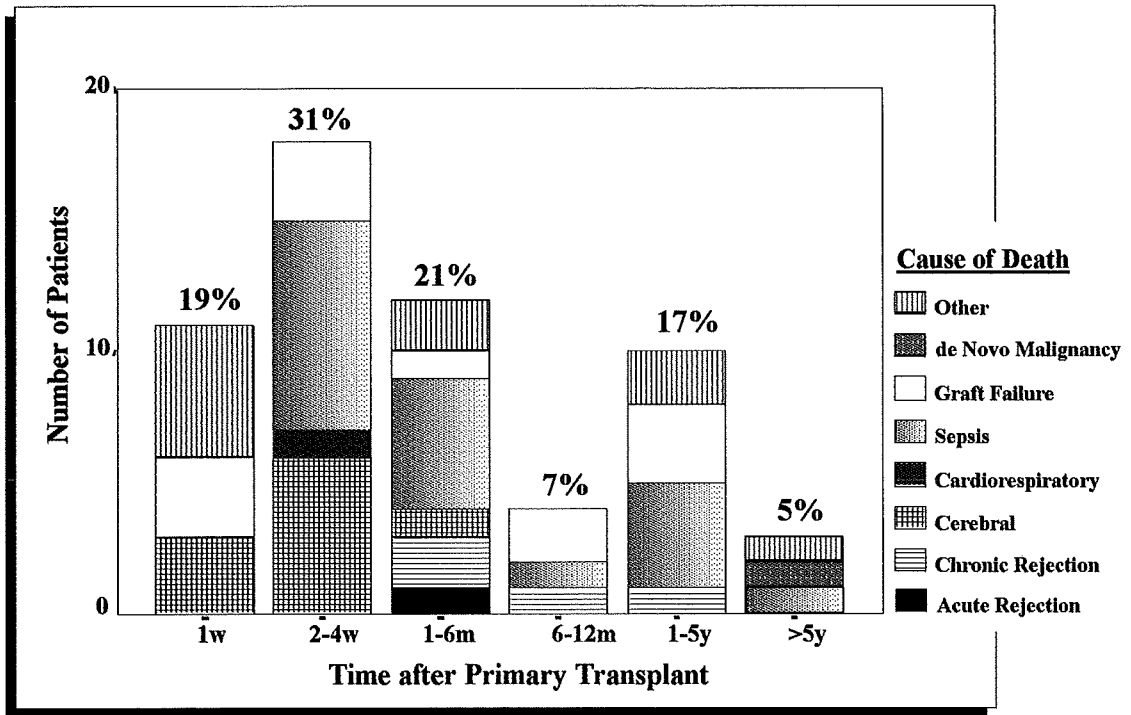


Cause of Death by Time Post - Transplant

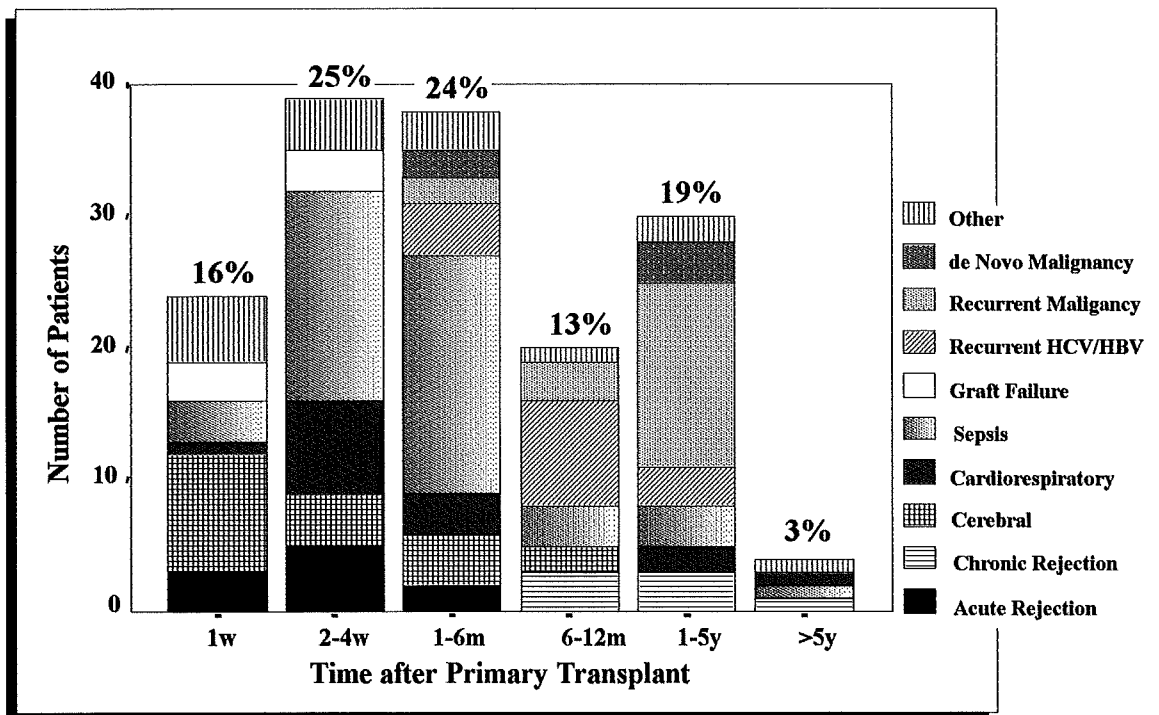




Causes of Death - Paediatric Recipients



Causes of Death - Adult Recipients



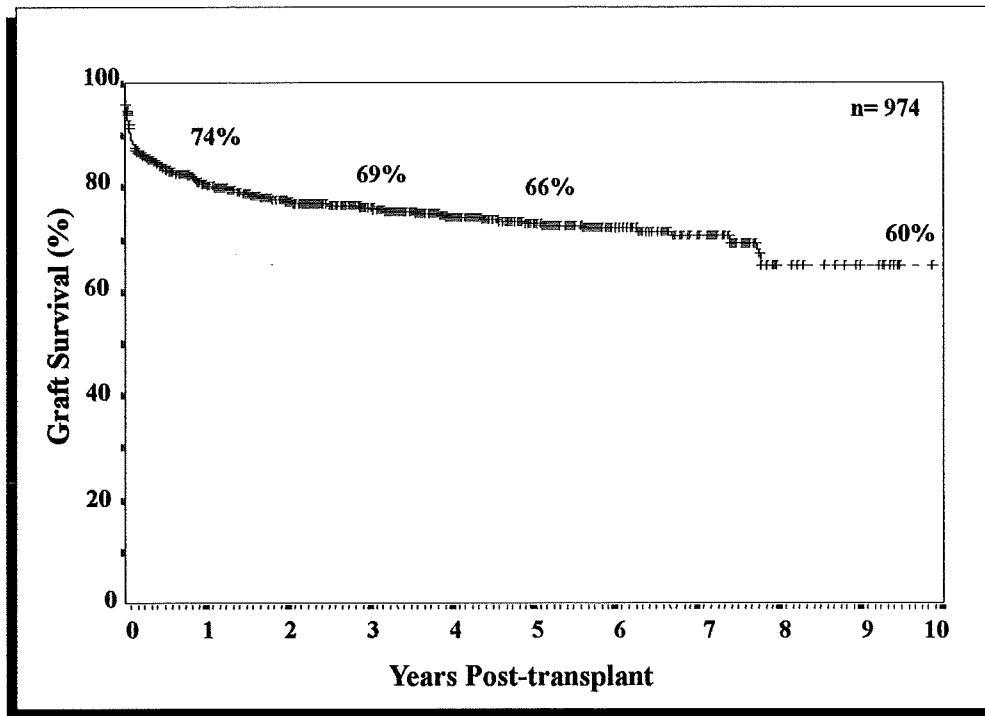


Section 5

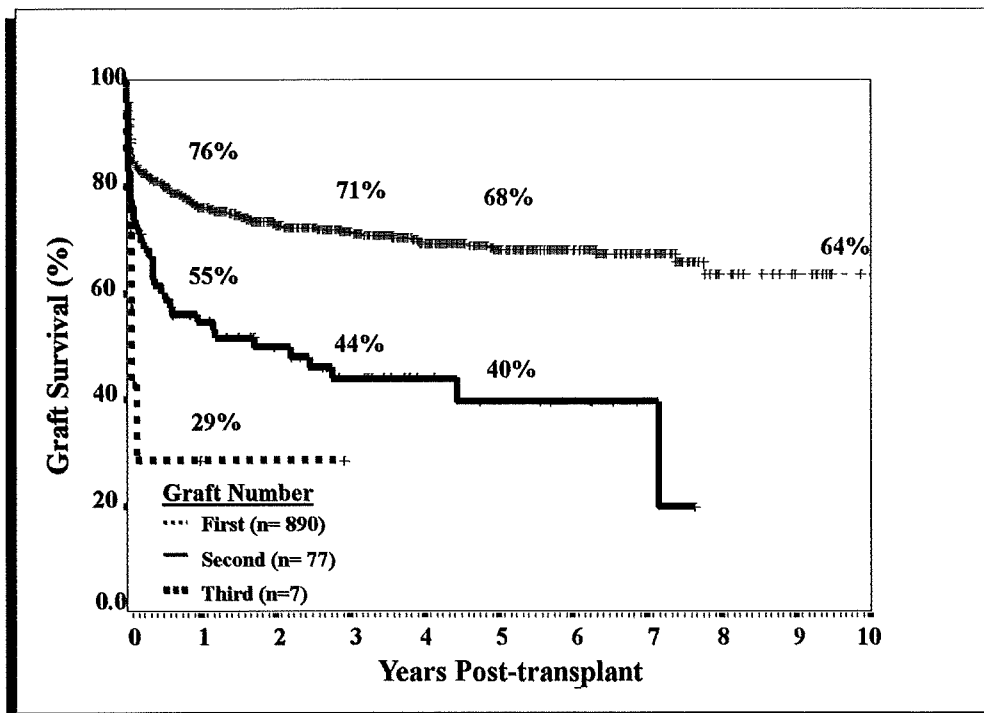
Graft Survival and Retransplantation



Actuarial Graft Survival - All Grafts

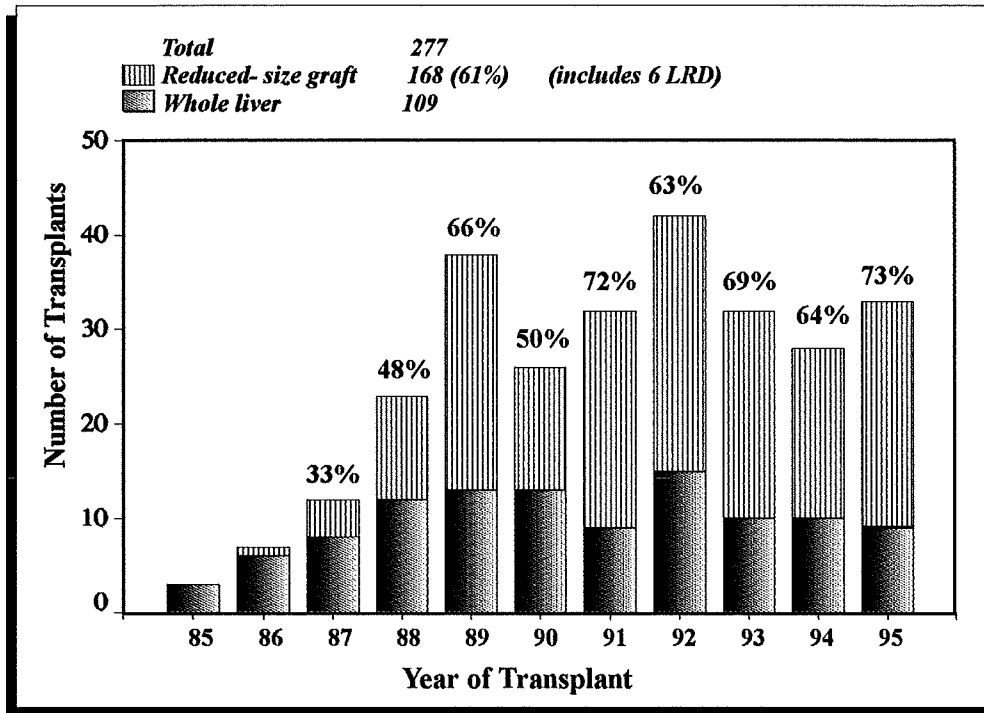


Actuarial Graft Survival

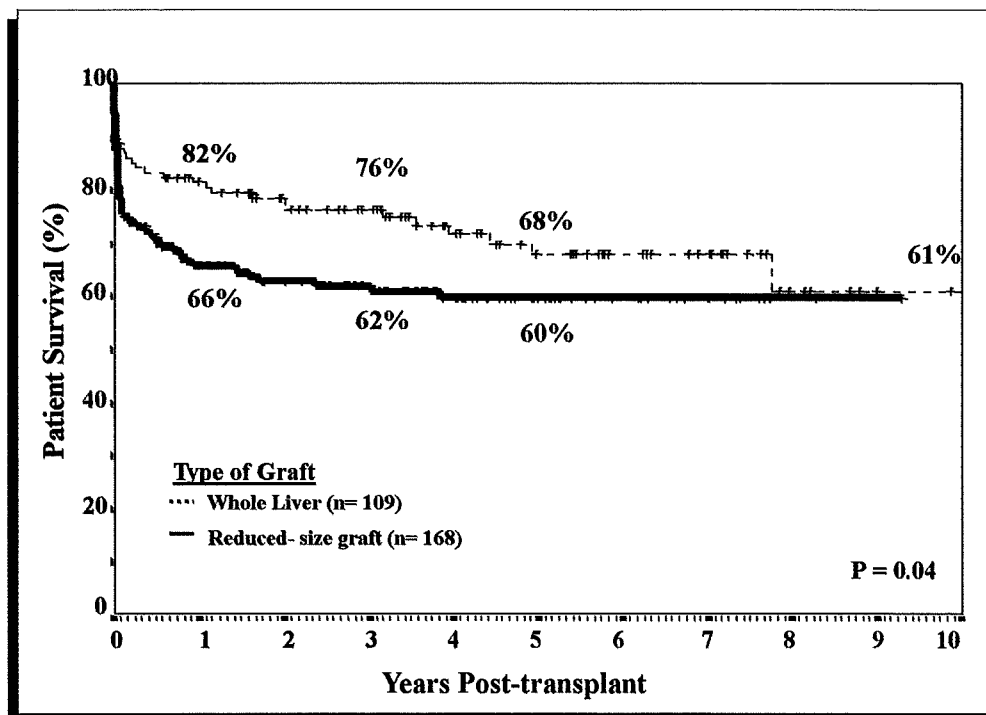




Type of Graft - All Paediatric Transplants

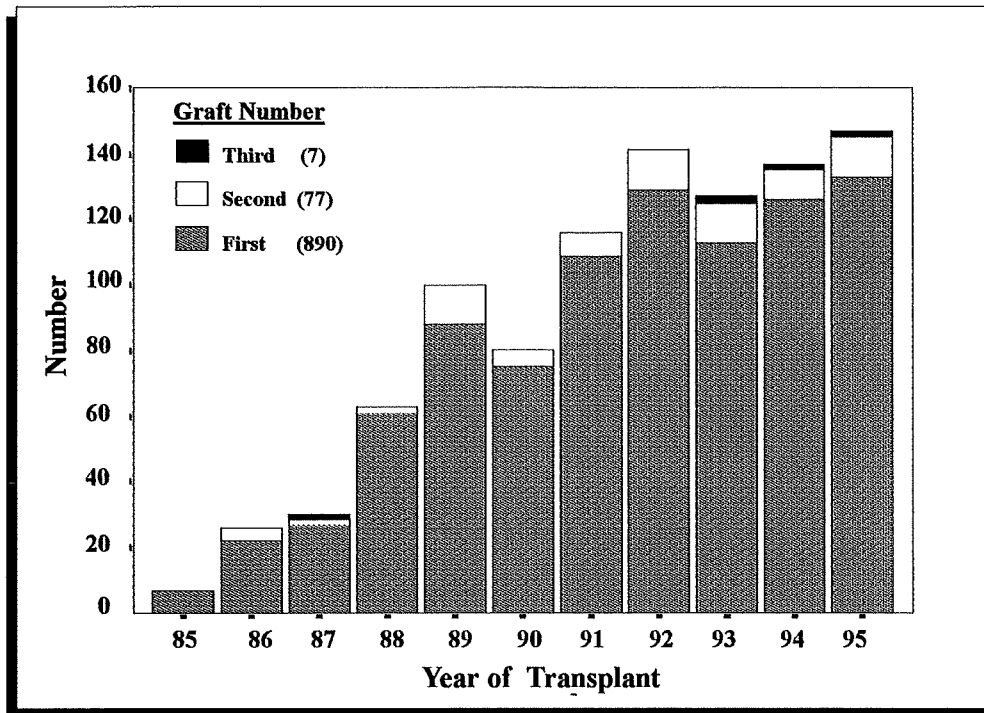


Graft Survival by Type of Graft - Paediatric Recipients

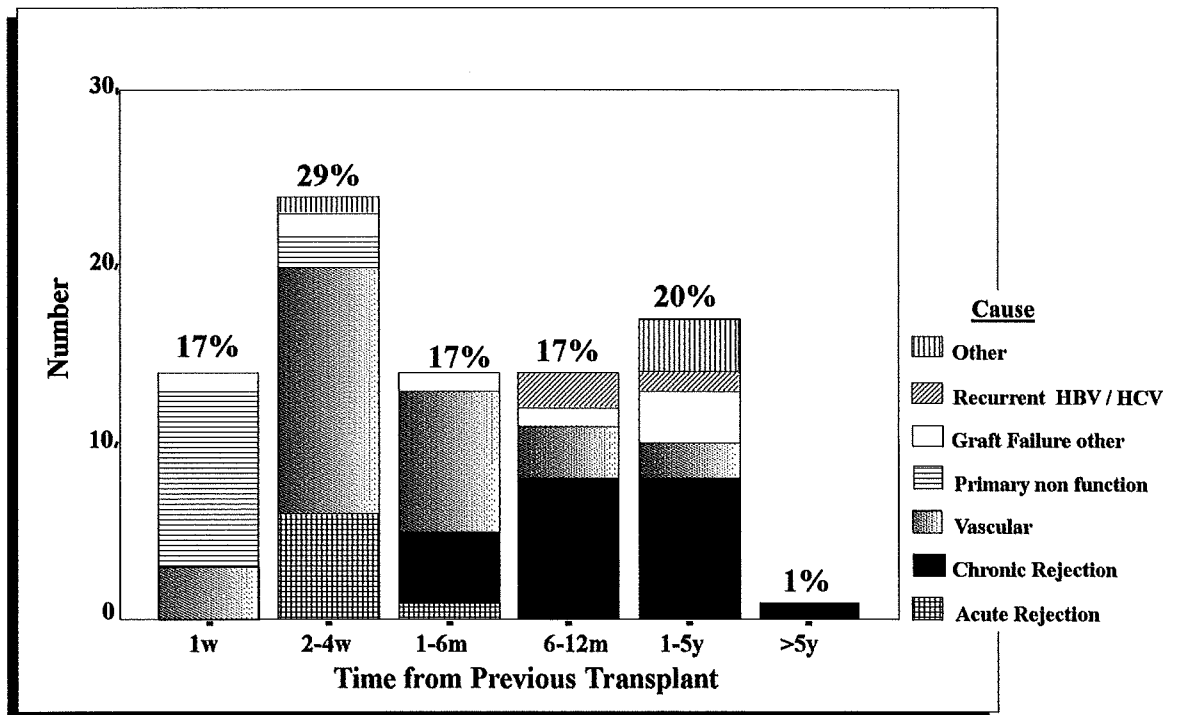




Retransplantation by Year of Transplant

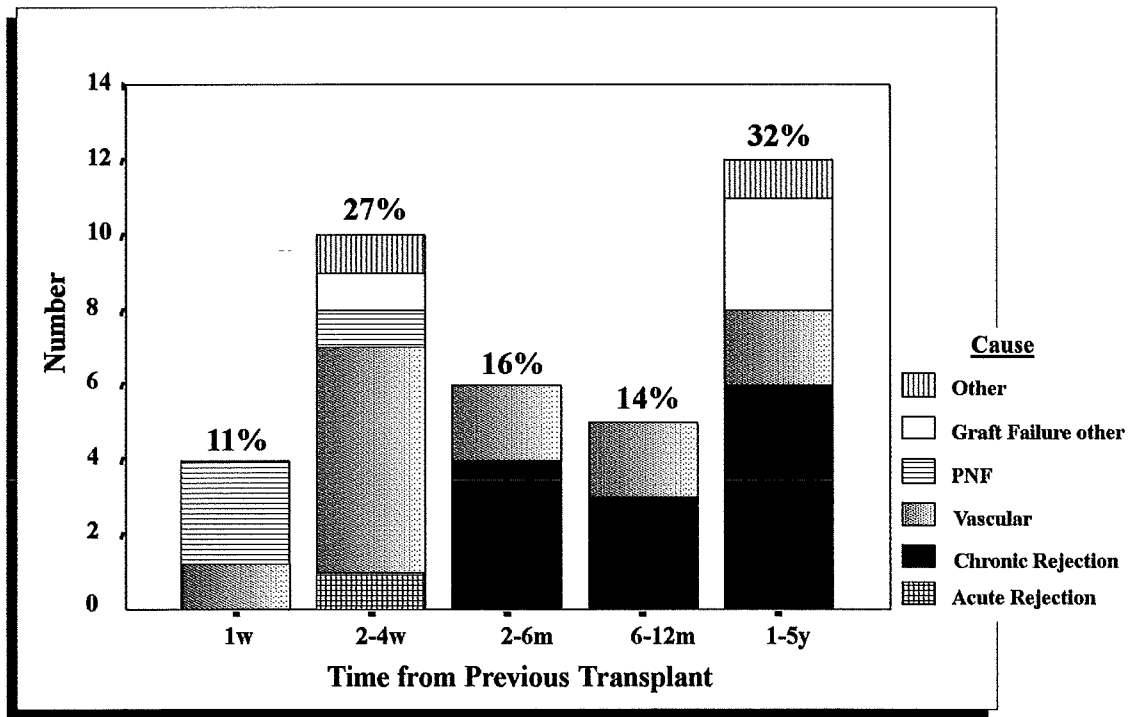


Retransplantation Indication by Time

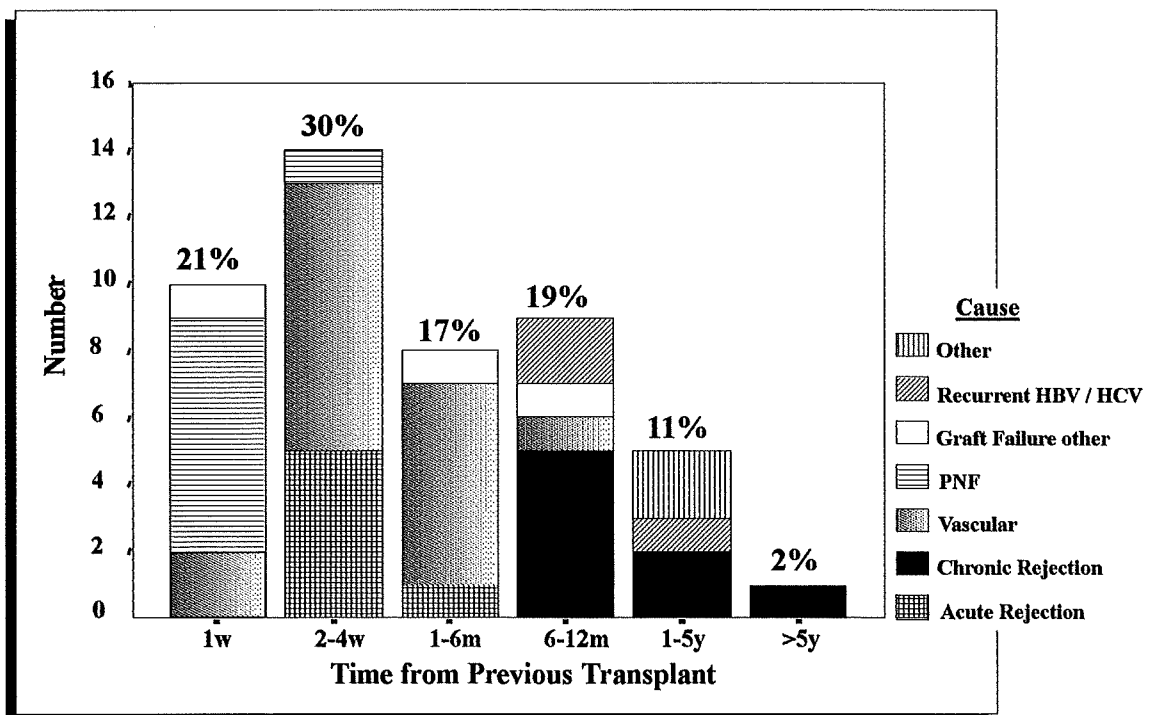




Retransplantation Indication - Paediatric Recipients



Retransplantation Indication - Adult Recipients





Section 6

Donors

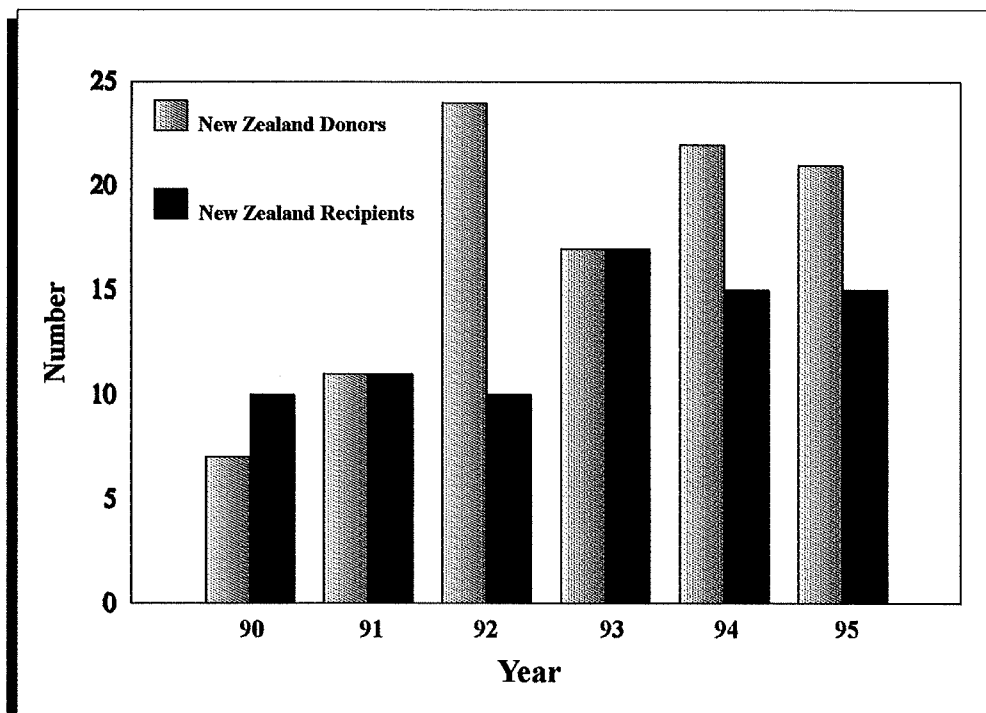


Donor Source

Donor Source	1990	1991	1992	1993	1994	1995
Cadaver Donor	79	113	139	127	135	142
<i>Australia (used as split liver)</i>	72	102 (2)	115	110	113 (2)	121 (4)
<i>New Zealand (%)</i>	7 (9%)	11 (10%)	24 (17%)	17 (13%)	22 (16%)	21 (15%)
Living Related Donor	1	1	2	-	-	1
Total Number of Transplants	80	116	141	127	137	147



Donors from New Zealand and New Zealand Recipients Transplanted



Australian Liver Transplant Units

Queensland Liver Transplant Service
Princess Alexandra Hospital
Ipswich Rd
WOOLLOONGABBA, QLD, 4102

and

Royal Children's Hospital
Bowen Bridge Rd
HERSTON, QLD, 4029

Liver Transplantation Unit
Royal Prince Alfred Hospital
Missenden Rd
CAMPERDOWN, NSW, 2050

and

The New Children's Hospital
Hawkesbury Rd
WESTMEAD, NSW, 2145

Liver Transplant Unit Victoria
The Austin Hospital
Studley Rd
HEIDELBERG, VIC, 3084

and

The Royal Children's Hospital
Flemington Rd
PARKVILLE, VIC, 3052

South Australian Liver Transplant Unit
Flinders Medical Centre
Flinders Drive
BEDFORD PARK, SA, 5042

WA Liver Transplantation Service
Sir Charles Gairdner Hospital
Verdun St
NEDLANDS, WA, 6009